

Enjoy a day out discovering local art

South Ashford Art Trail Map

4th - 20th June



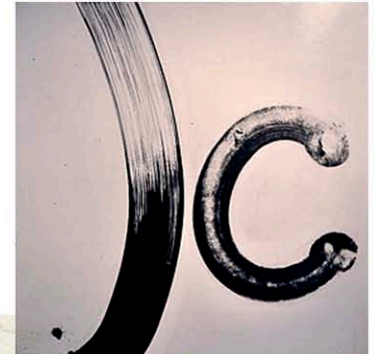
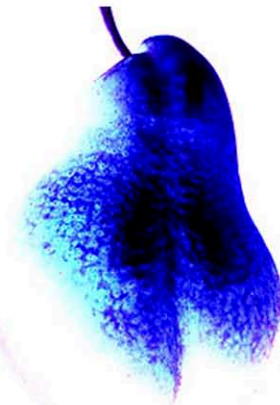
229 Rosemary Hignett
The Old School
School Hill
Warehorne TN26 2LD
11am to 6pm



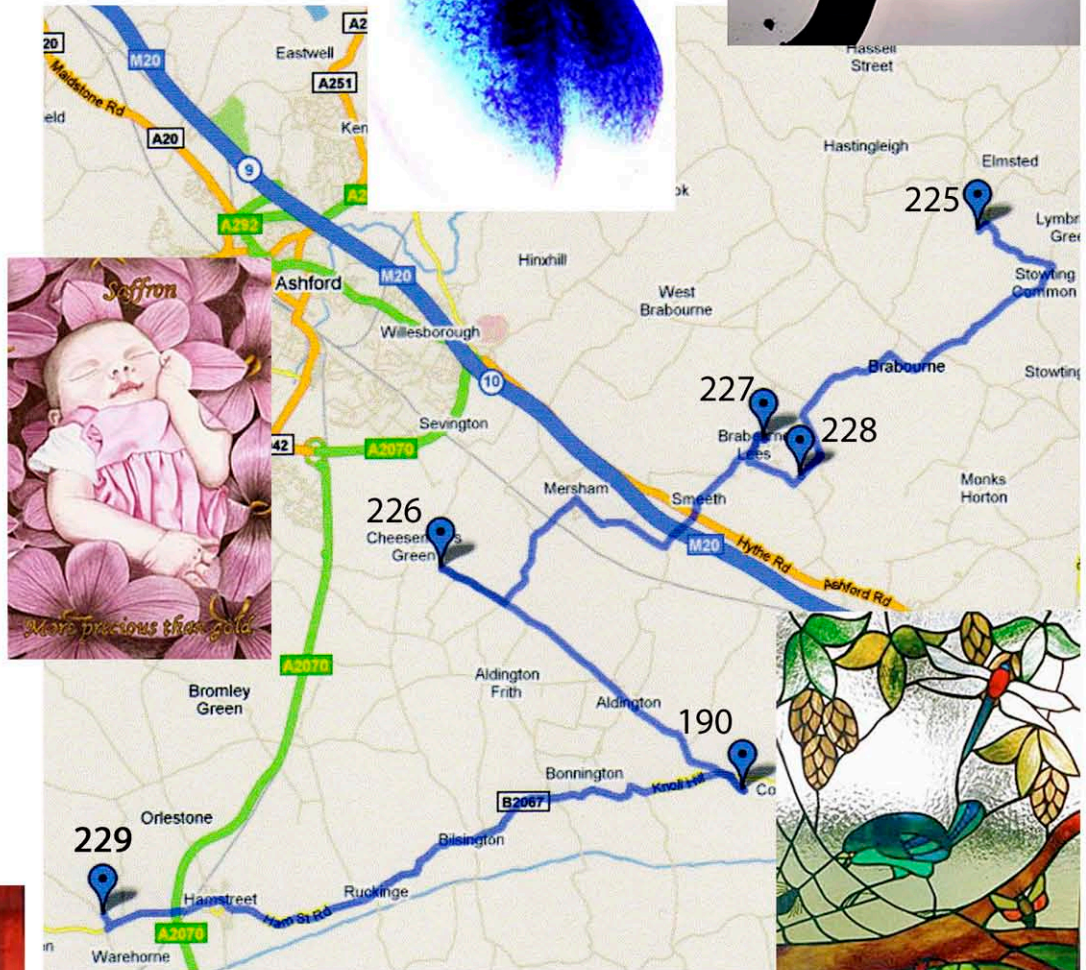
190 Brenda Norrish
Marwood Farm
Aldington TN25 7BX
10.30 am to 5pm

RECOMMENDED DAYS TO VISIT
5 and 6 June 2010
to visit all the artists on the route. For other studio opening days and times please see guide

226 Carolyn Cloke
Woodhouse Farm
Mersham TN25 7HU
11am to 6pm



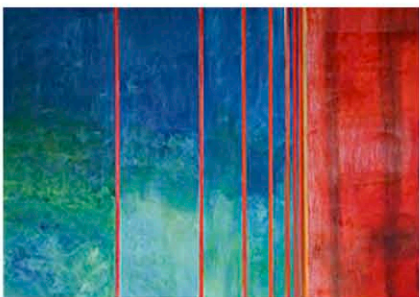
227 Liz Garnett
6 Mountbatten Way
Brabourne Lees TN25 6PZ
11am to 5pm



228 Michael Tremblay
Oylers Folly
Pound Lane
Brabourne Lees TN25 6RJ
11am to 5pm



225 Rod McIntosh
Dawltan Barn
Whatsole Street
Elmsted TN25 5JW
11am to 6pm



Pick up a **FREE GUIDE** from your local Library or Tourist Office

For more information visit www.seos-art.org